

Successful treatment of tandem calcific right coronary artery stenoses with 50 mm tapered Biomime Morph stent guided by intravascular ultrasound and rotablation using a sheathless guide via the radial access

Baskar Sekar, Ayush Khurana, Anirban Choudhury*

Department of Cardiology, University Hospital of Wales, Cardiff and Vale University Health Board, Cardiff, United Kingdom

ARTICLE INFO

Article history:

Received 4 August 2018

Received in revised form

31 October 2018

Accepted 15 November 2018

Keywords:

Tapered stent

IVUS

Rotablation

Stent overlap

ABSTRACT

Tandem and/or diffuse calcific coronary stenoses can present significant challenges during percutaneous coronary intervention (PCI). Often, these long lesions require treatment with multiple stents of different calibers. However, this approach can result in unfavorable outcomes due to delayed healing and increased inflammation from doubling of metal, drug and polymer at the site of overlap.^{1,2} To overcome these limitations, longer (up to 48 mm) lengths of conventional stents [Xience (Abbott Vascular), Synergy (Boston Scientific)] have been manufactured and initial smallish studies point towards possible reduction of adverse events compared to overlapping stents of the same platform.³

© 2018 Published by Elsevier B.V. on behalf of Cardiological Society of India. This is an open access article under the CC BY-NC-ND license (<http://creativecommons.org/licenses/by-nc-nd/4.0/>).

Introduction

Tandem and/or diffuse calcific coronary stenoses can present significant challenges during percutaneous coronary intervention (PCI). Often, these long lesions require treatment with multiple stents of different calibers. However, this approach can result in unfavorable outcomes due to delayed healing and increased inflammation from doubling of metal, drug and polymer at the site of overlap.^{1,2} To overcome these limitations, longer (up to 48 mm) lengths of conventional stents [Xience (Abbott Vascular), Synergy (Boston Scientific)] have been manufactured and initial smallish studies point towards possible reduction of adverse events compared to overlapping stents of the same platform.³

Case report

An 84-year-old lady, weighing 54 kg was admitted with inferior N-STEMI. Coronary angiogram performed via right radial approach revealed a dominant, heavily calcific right coronary artery (Fig. 1A–D) with critical stenoses in the mid segment and further

calcific moderate to significant stenoses distally (Fig. 2A). In view of small radial artery and possible need for rotablation, PCI was undertaken with a 7.5 French sheathless AL 0.75 guide (Asahi Intecc). After multiple attempts the lesion was finally navigated with a Pilot 200 wire with Corsair micro catheter support. Following partially successful pre-dilation (2 mm CB followed by 2.5 mm NCB), an intravascular ultrasound (IVUS) was performed that confirmed a long length of heavy burden of fibro-calcific atheroma along with significant recoil. For optimal vessel preparation rotational atherectomy was performed using a 2mm burr. This led to successful pre-dilatation with a 3 mm NC balloon and subsequent implantation of a tapered 3.5/3 × 50mm Biomime morph drug eluting stent. The stent was further optimized with 3mm and 3.5 mm NCBs from distal to proximal aspect with an excellent angiographic result (Fig. 2B–C). Repeat IVUS confirmed adequate stent expansion and the nice taper of the stent from the proximal to the mid to the distal segment (Fig. 2D–F). She was discharged home few days later and at one year follow-up, she remained angina free.

* Corresponding author. Consultant Cardiologist, University Hospital of Wales, Cardiff and Vale University Health Board, Cardiff, United Kingdom.

E-mail address: anirban.choudhury@wales.nhs.uk (A. Choudhury).

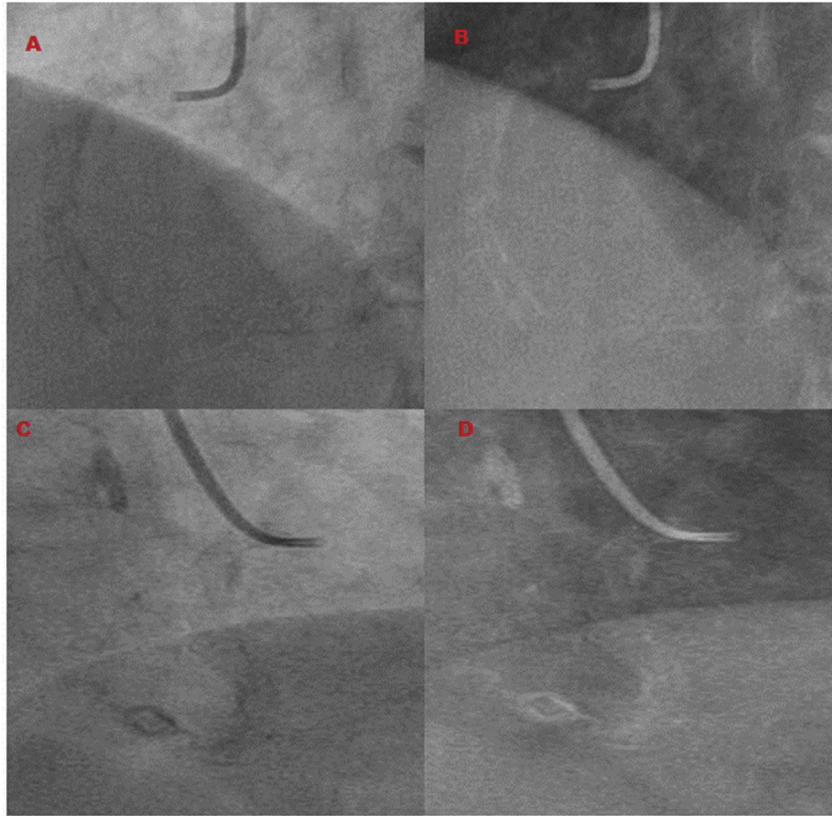


Fig. 1. Images of RCA in LAO (A–B) and RAO (C–D) projections without contrast revealing extensive calcification in the RCA.

Discussion

Reduction of access site complications associated with PCI in the setting of MI and low body weight patients makes radial artery the preferred access site in such settings.⁴ The need to use adjunctive devices like rotablation leads to the use of larger (>6 French) guide catheters making radial access difficult especially in elderly low body weight patients with smaller radial artery due to sheath-artery mismatch. The Asahi 7.5 French sheathless guide catheters have an outer diameter similar to conventional 6 French guide catheters making radial artery access possible in these situations (as documented in our patient) with shorter length of stay, lower rates of vascular complication, major bleeding and transfusion compared to rotablation done via the femoral access.⁵

In tandem and/or diffusely diseased vessels with angiographic suggestion of significant calcification intracoronary imaging should be considered not only to decide on optimal stent sizing but also to assess overall burden of fibrocalcific disease (extent, thickness and degree of calcification). The later can aid the operator in deciding whether conventional vessel preparation with (compliant and non-compliant) balloons will be adequate or whether there will be a need for further plaque modification using scoring balloons, shockwave balloons, laser therapy or rotablation. In our patient suboptimal expansion of 2.5 NCB along with IVUS evidence of long length of heavy burden of fibro-calcific atheroma and significant recoil guided us towards the need for further plaque modification with rotablation. Adequate vessel preparation following plaque

modification by any of the above adjunctive devices should be confirmed by optimal balloon expansion prior to proceeding with stent implantation. Repeating the intracoronary imaging should be considered prior to stent implantation to document adequate plaque modification (eg. breaks in heavily calcific segments) and also post stent implant to decide on need for further stent optimization. In our patient IVUS post stent implantation revealed well apposed stents along with a nice taper from the proximal to distal end as was intended prior to stent implantation and guided by pre-stent IVUS assessment.

The novel BioMime Morph (Meril Life Sciences, India) is a 40, 50 and 60 mm long sirolimus-eluting cobalt chromium stent (65 μ m strut thickness, biodegradable polymer) with a tapered design (0.5 mm taper from proximal to distal end) and is available in the following proximal and distal diameters (2.75–2.25 mm, 3–2.5 mm and 3.5–3 mm). The design premises of the Morph stent are three-fold: procedural concerns associated with stenting of long diffusely diseased lesions with overlapping stents; anatomical shape of vessels (10–15% taper for every 30 mm) and potentially improved vessel healing and reduction of MI with ultra-thin strut stents.⁶

Biomime Morph stents can be a novel alternative for treatment of long coronary lesions, overcoming the limitations of overlapping stents. In addition, their use can also minimize contrast usage and fluoroscopy time. Initial reports from single center registries have been promising^{7,8} and a larger multi center registry is underway that will further clarify the potential role of this stent in routine clinical practice.⁹

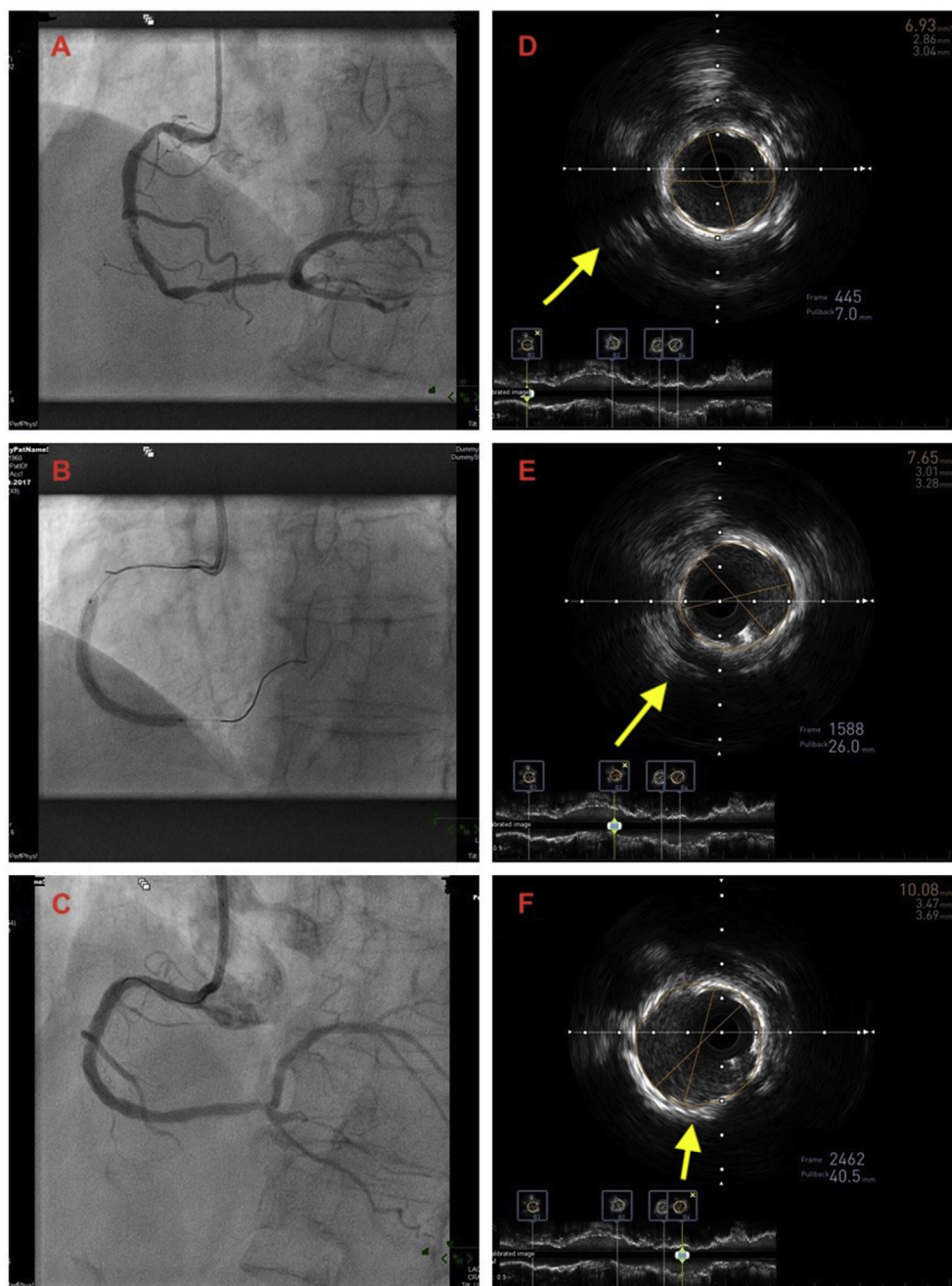


Fig. 2. Diffuse CAD in the RCA prior to and post stent implantation (A–C); IVUS showing the taper of the stent from the proximal to the mid and distal vessel (D–F).

Conflict of interest

None.

References

1. Raber L, Juni P, Loffel L, et al. Impact of stent overlap on angiographic and long-term clinical outcome in patients undergoing drug-eluting stent implantation. *J Am Coll Cardiol.* 2010;55:1178–1188.
2. Finn AV, Kolodgie FD, Harnek J, et al. Differential response of delayed healing and persistent inflammation at sites of overlapping sirolimus- or paclitaxel-eluting stents. *Circulation.* 2005;112:270–278.
3. Secco GG, Tebaldi M, Parisi R, et al. One-year clinical outcomes of forty-eight millimeter everolimus-eluting stent implanted in very long lesions: a propensity-matched comparison (the FREIUS study). *Invasive Cardiol.* 2018;30:133–137.
4. Vavalle JP, Rao SV. The association between the transradial approach for percutaneous coronary interventions and bleeding. *J Invasive Cardiol.* 2009;21:21–24.
5. Kinnaird T, Cockburn J, Choudhury A, et al. Temporal changes in radial access use, associates and outcomes in patients undergoing PCI using rotational atherectomy between 2007 and 2014: results from the British Cardiovascular Intervention Society national database. *Am Heart J.* 2018;198:46–54.
6. Kandzari DE, Koolen JJ, Doros G, et al, BIOFLOW V Investigators. Ultrathin bioresorbable polymer sirolimus-eluting stents versus thin durable polymer everolimus-eluting stents: BIOFLOW V 2-year results. *J Am Coll Cardiol.* 2018 Sep 19. <https://doi.org/10.1016/j.jacc.2018.09.019>. pii: S0735-1097(18)38480-38488 [Epub ahead of print].

7. Valero E, Consuegra-Sánchez L, Miñana G, et al. Initial experience with the novel BioMime 60 mm-long sirolimus-eluting tapered stent system in long coronary lesions. *EuroIntervention*. 2018;13:1591–1594.
8. Choudhury A, Premawardhana A, Baskar S et al. Initial experience with the novel Biomime Morph 40-60 mm long sirolimus-eluting tapered stent in long coronary lesions. <https://abstractbook.pconline.com/export/pdf/id/100680>.
9. Morpheus Global registry: A prospective, single-arm, multi-centre, observational, real world registry to evaluate safety and performance of the BioMime™ Morph Sirolimus Eluting Coronary Stent System for very long coronary lesions. ClinicalTrials.gov Identifier: NCT02901353.