

More to Life



Where research becomes the basis of discovering newer ways of alleviating human suffering and empowering an individual with good health.

Meril

Diagnostics



Merilyzer | Quantilyte™



Meril Diagnostics

Emerging from a lineage of successful business enterprise, Meril Diagnostics is an in-vitro diagnostic arm of the multi million dollar group MNC.

Meril Diagnostic's core objective is to design, manufacture and distribute, clinically relevant, state of the art and best in class analyzers and reagents to alleviate human suffering and improve Quality of Life.

Corporate Office

Meril's corporate office sits proud ensconced within the serene hill sides of Chala town; located 150 kms north of Mumbai at Vapi



Manufacturing

300,000 sq feet state of the art manufacturing, research and development facility located at Vapi for Diagnostics, Orthopaedics, Endo-surgery equipments and Cardiovascular, comprising a team of designers, engineers, chemists, microbiologists and R&D scientists.



Meril Training Academy

While innovations and advancements play a vital role in contributing towards better health of the society, a larger role also lies in educating and imparting training to pathologists, clinicians, technicians and other members of the medical fraternity.



Meril's Training Academy is a world class, first of its kind institution that offers both practicing professionals and students hands on training and knowledge.



Modernistic, contemporary academy with Hands on Trainings, Simulators, Live Case Learning, Distance learning, Hard-ware play rooms, Libraries, Cadaver and Animal models.

Electrolyte Analyzer

Quantilyte™ implements advanced ion selective electrode (ISE) measurement technology with power failure protection to avoid data loss, automatic sleep mode and option to power off any time reducing reagent consumption, making it the ideal choice for all types of laboratory locations.

Quantilyte™ is a simple YES/NO prompted operation analyzer making it extremely user friendly.

- Analysis Method: Ion selective electrode (ISE)
- Sample type: Serum, plasma, whole blood, cerebrospinal fluid and diluted urine
- Sample volume: 60 - 150 μ l (3 parameters to 5 parameters)
- Rapid test speed of 60 tests per hour
- Measuring speed: \leq 25 seconds
- Storage upto 10,000 test results
- High accurate and long life electrode
- Programmable multi format print out
- Sleep mode to reduce reagent consumption
- Reagent pack, real time monitoring of reagent residual volume
- Optional Sample Auto-loader
- Internal thermal printer



Innovative Features

Quantilyte™ implements advanced ion-selective electrode (ISE) measurement technology that utilizes maintenance free ion selective electrodes having long life span. The machine adopts innovative international patent technology of wave theory flushing method and direct flushing pipe method to avoid blockage and crossed contamination.



Accurate

Quantilyte™ is equipped with high accurate and long life electrode. Automatic detection and filtering system for tiny bubbles to avoid clog and ensure accurate measurement. Abnormal results flagging ensure precise and accurate results.

Reliable

Quantilyte™ is equipped with power failure protection to avoid data loss, supporting fuzzy query.

Auto Sampler module

Quantilyte™ assay performance is enhanced by auto sampler module. Analyzer can absorb the specimen and calibrate the ion automatically. It only takes 25 seconds to finish the process of absorbing the specimen and indicating the result.

Built in Printer

Quantilyte™ thermal printer is capable of printing patient results, calibration values, QC data and abnormal sample flagging. Programmed to print QC graph and QC statistical parameters.



Analyzer Software

Quantilyte™ user friendly menu ensures ease of operation. Automatic calibration and two-point correction to adjust slope and intercept.



Detection Range and Precision

Items	Measuring Range	Resolution	Measuring Precision (CV%)
K ⁺	0.5 - 20.0 mmol/L	0.01 mmol/L	≤ 1.0%
Na ⁺	15 - 200 mmol/L	0.1 mmol/L	≤ 1.0%
Cl ⁻	15 - 200 mmol/L	0.1 mmol/L	≤ 1.0%
Ca ²⁺	0.1 - 6.0 mmol/L	0.1 mmol/L	≤ 1.0%
pH	4 - 9 pH	0.01 pH	≤ 0.5%

Innovative Features

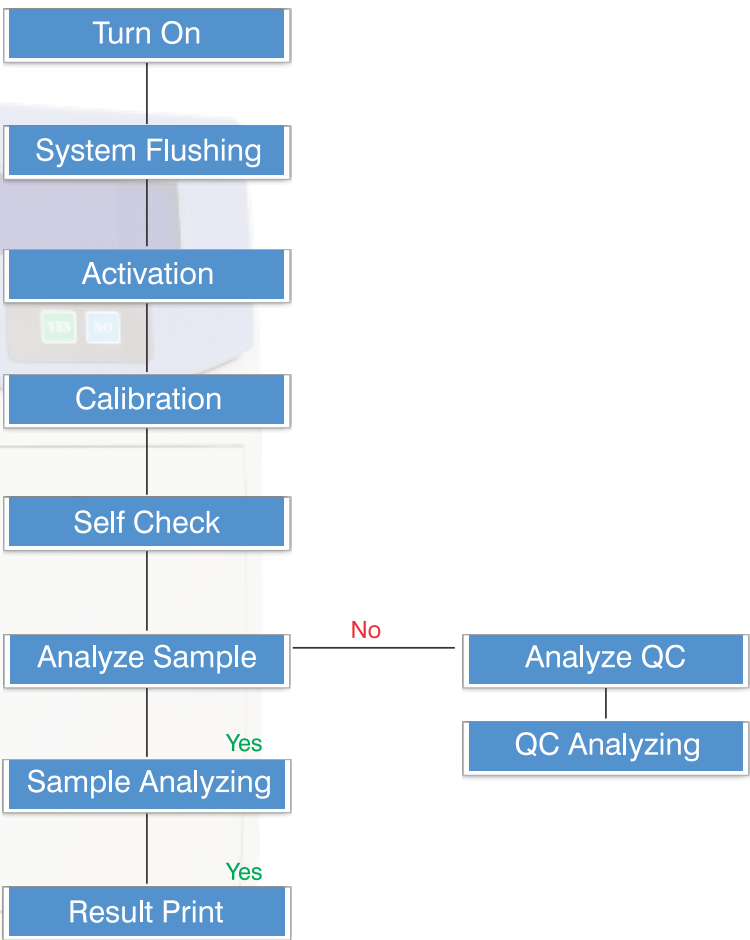
Technical Specifications

Principle	Ion Selective Electrode (ISE)
Sample	Serum, plasma, whole blood, cerebrospinal fluid (CSF) and diluted urine
Measuring speed	≤ 25 seconds
Sample	60 - 150 μ l (depends on electrodes)
Sample position (available only for sample autoloader)	35 positions (including 1 QC)
Storage	Upto 10,000 test results
Printer	Internal thermal printer
Interface	RS232
Operating temperature	10°C to 30°C
Relative Humidity	≤ 80%
Atmospheric Pressure	86 - 106 kPa
Power supply	220V \pm 22V, 50 \pm 1Hz
Power	≤ 120W
Dimensions	38 cm(W) x 27 cm(D) x 40 cm(H)
Weight	Approx 6 kg

Parameter configuration

A K, Na, Cl
B K, Na, Cl, iCa, nCa, TCa, pH

Operational FlowChart





CODE	ANALYTE	PACK SIZE
STAELC - 01	STD A	6 x 250 ml
STBELC - 01	STD B	2 x 250 ml
CLNELC - 01	CLEANING SOLUTION	110 ml
DEPELC - 01	DEPROTEINIZING SOLUTION	110 ml
ACTELC - 01	ACTIVATING SOLUTION	110 ml
QCSELC - 01	QC SOLUTION	110 ml
EISELC - 01	ELECTRODE INSIDE SOLUTION	3 ml
REFELC - 01	REFERENCE ELECTRODE FILLING SOLUTION	10 ml



More to Life

Meril Diagnostics Pvt. Ltd.

D1 - D3, Second Floor, Meril Park,
Survey No. 135/2/B & 174/2,
Muktanand Marg, Chala,
Vapi - 396191, India.

T +91 22 30732400

F +91 22 39350777

Meril GmbH.

Bornheimer Strasse 135-137,
D-53119 Bonn. Germany.

T +49 228 7100 4000

F +49 228 7100 4001

Meril South America

Doc Med LTDA
Al. dos Tupiniquins,
1079 – Cep: 04077-003 – Moema
Sao Paulo. Brazil.

T (F) +55 11 9738 04868

**Meril Tıbbi Cihazlar
İmalat ve Ticaret A.Ş.**

Mimar Sinan Mah. Cavusbasi Cad.
Ozge Sok. 5/6 Cekmekoy 34782
Istanbul / Turkey

T +90 53 2272 5172

Email: diagnostics@merillife.com

Website: www.merillife.com

Customer Care: 1-800-266-3745 (Toll Free)